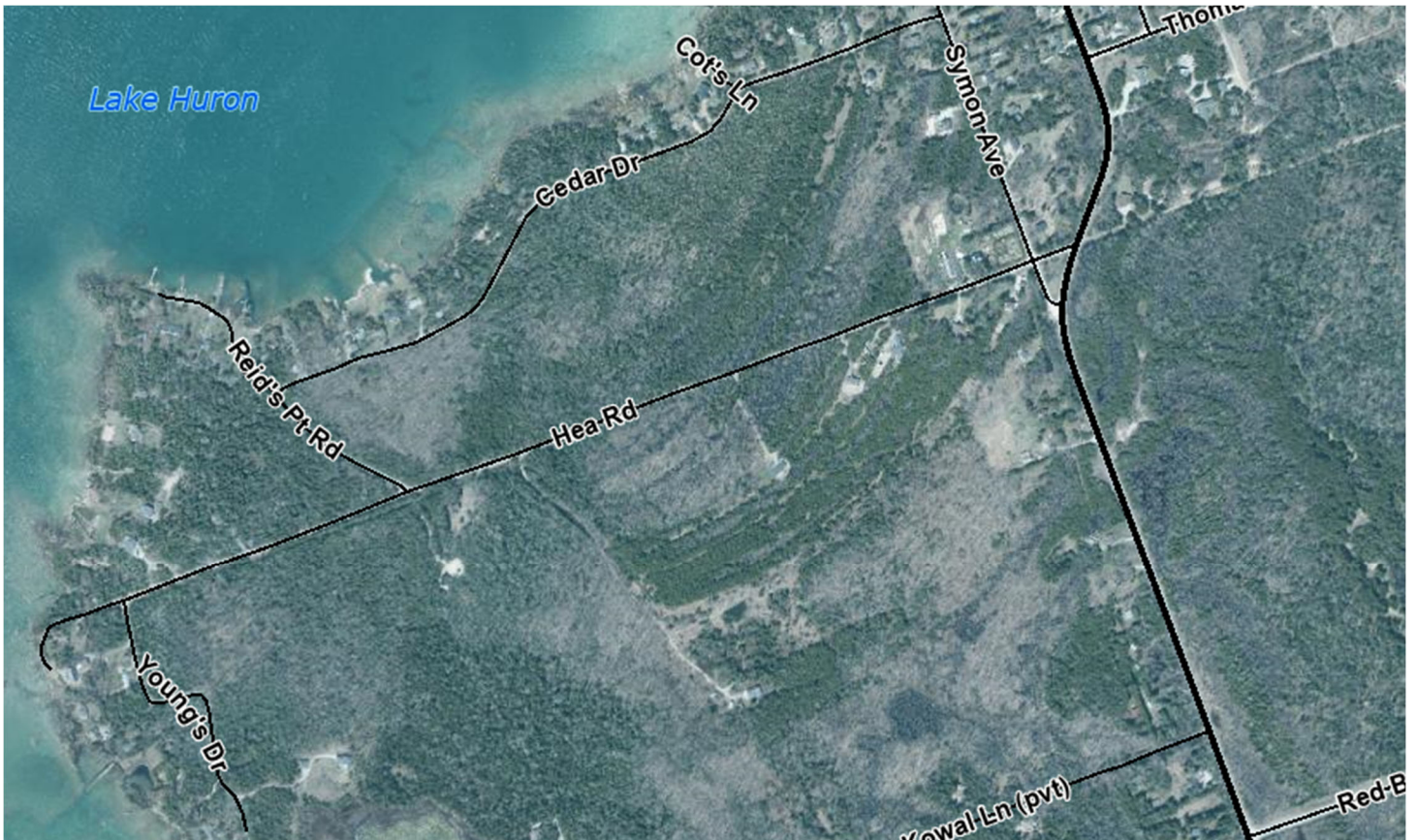


Town of South Bruce Peninsula Roadside Tree Maintenance Program Beginning November 21, 2022

Roadsides within the Red Bay area that will be brushed this fall, weather permitting, include:

- Cedar Drive
- Reid's Point Road
- Hea Road
- Young's Drive
- Reid's Point Road
- Young's Drive



The work along the roadsides will include the removal of hazardous vegetation including low hanging branches, shrubs and dead, diseased, or hazardous trees.

Larger wood material will be left safely on the roadside for approximately one week; residents are welcome to take the material, and anything left after the one-week period will be removed by Public Works crews.

Maps of tree brushing locations will be posted on the Town's [website](#) two weeks prior to work commencing.

The Town's Tree and Brush Maintenance Policy can be found on the Town's [website](#).